

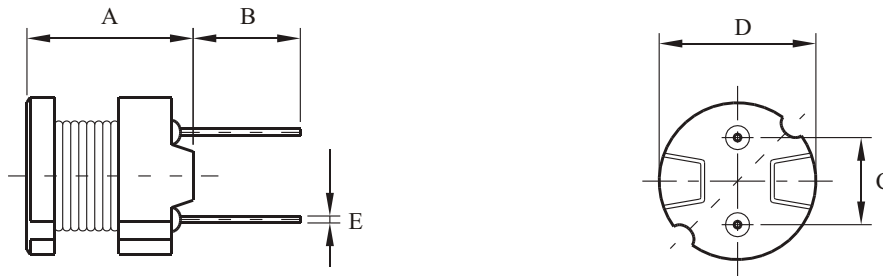
Features

- Polyolefin Shrink Tubing
- Wire-wound construction
- High Inductance and Lower RDC
- Excellent Environmental characteristics high reliability

Applications

- Power Supplies
- SCR and TRIAC Controls
- RFI Suppression
- Filters
- Switching Regulators

► Dimensions & Configurations (Unit:mm)



| Type | A (max) | B ± 1.0 | C ± 0.3 | D (max) | E |
|----------|---------|---------|---------|---------|------|
| MC2W0605 | 5.0 | 4.0 | 4.0 | 6.5 | 0.5 |
| MC2W0606 | 6.5 | 4.0 | 4.0 | 6.5 | 0.5 |
| MC2W0805 | 5.5 | 5.0 | 5.0 | 8.3 | 0.65 |
| MC2W0807 | 7.5 | 5.0 | 5.0 | 8.3 | 0.65 |
| MC2W0809 | 9.5 | 5.0 | 5.0 | 8.3 | 0.65 |
| MC2W1014 | 14.4 | 3.5 | 5.0 | 10.5 | 0.8 |

Note: Design as Customer's Requested Specifications.

▶ Electrical Characteristics For MC2W0605 Series

| Part Number | Inductance [μH] | DCR(max) [Ω] | IDC [A] |
|-----------------|--------------------|-----------------|------------|
| MC2W0605 - 220M | 22 | 0.18 | 0.90 |
| MC2W0605 - 270M | 27 | 0.21 | 0.81 |
| MC2W0605 - 330M | 33 | 0.27 | 0.74 |
| MC2W0605 - 390M | 39 | 0.29 | 0.68 |
| MC2W0605 - 470M | 47 | 0.34 | 0.62 |
| MC2W0605 - 560M | 56 | 0.42 | 0.57 |
| MC2W0605 - 680M | 68 | 0.48 | 0.51 |
| MC2W0605 - 820M | 82 | 0.55 | 0.47 |
| MC2W0605 - 101K | 100 | 0.68 | 0.42 |
| MC2W0605 - 121K | 120 | 0.77 | 0.39 |
| MC2W0605 - 151K | 150 | 0.95 | 0.35 |
| MC2W0605 - 181K | 180 | 1.15 | 0.32 |
| MC2W0605 - 221K | 220 | 1.30 | 0.29 |
| MC2W0605 - 271K | 270 | 1.55 | 0.26 |
| MC2W0605 - 331K | 330 | 2.18 | 0.23 |
| MC2W0605 - 391K | 390 | 2.47 | 0.21 |
| MC2W0605 - 471K | 470 | 2.92 | 0.20 |
| MC2W0605 - 561K | 560 | 3.97 | 0.18 |
| MC2W0605 - 681K | 680 | 4.57 | 0.16 |
| MC2W0605 - 821K | 820 | 5.28 | 0.15 |
| MC2W0605 - 102K | 1000 | 7.06 | 0.13 |

▶ Electrical Characteristics For MC2W0606 Series

| Part Number | Inductance [μH] | DCR(max) [Ω] | IDC [A] |
|-----------------|--------------------|-----------------|------------|
| MC2W0606 - 220M | 22 | 0.11 | 1.27 |
| MC2W0606 - 270M | 27 | 0.14 | 1.14 |
| MC2W0606 - 330M | 33 | 0.17 | 1.03 |
| MC2W0606 - 390M | 39 | 0.19 | 0.95 |
| MC2W0606 - 470M | 47 | 0.23 | 0.87 |
| MC2W0606 - 560M | 56 | 0.26 | 0.80 |
| MC2W0606 - 680M | 68 | 0.28 | 0.72 |
| MC2W0606 - 820M | 82 | 0.39 | 0.66 |
| MC2W0606 - 101K | 100 | 0.43 | 0.59 |
| MC2W0606 - 121K | 120 | 0.54 | 0.54 |
| MC2W0606 - 151K | 150 | 0.64 | 0.48 |
| MC2W0606 - 181K | 180 | 0.74 | 0.44 |
| MC2W0606 - 221K | 220 | 0.96 | 0.40 |
| MC2W0606 - 271K | 270 | 1.12 | 0.36 |
| MC2W0606 - 331K | 330 | 1.48 | 0.33 |
| MC2W0606 - 391K | 390 | 1.66 | 0.30 |
| MC2W0606 - 471K | 470 | 1.91 | 0.28 |
| MC2W0606 - 561K | 560 | 2.31 | 0.25 |
| MC2W0606 - 681K | 680 | 2.67 | 0.23 |
| MC2W0606 - 821K | 820 | 3.10 | 0.21 |
| MC2W0606 - 102K | 1000 | 4.45 | 0.19 |

▶ Electrical Characteristics For MC2W0805 Series

| Part Number | Inductance [μH] | DCR(max) [Ω] | IDC [A] |
|-----------------|--------------------|-----------------|------------|
| MC2W0805 - 100M | 10 | 0.07 | 2.50 |
| MC2W0805 - 120M | 12 | 0.08 | 2.40 |
| MC2W0805 - 150M | 15 | 0.09 | 2.10 |
| MC2W0805 - 180M | 18 | 0.10 | 2.00 |
| MC2W0805 - 220M | 22 | 0.12 | 1.70 |
| MC2W0805 - 270M | 27 | 0.14 | 1.60 |
| MC2W0805 - 330M | 33 | 0.17 | 1.40 |
| MC2W0805 - 390M | 39 | 0.21 | 1.30 |
| MC2W0805 - 470M | 47 | 0.24 | 1.20 |
| MC2W0805 - 560M | 56 | 0.31 | 1.10 |
| MC2W0805 - 680M | 68 | 0.34 | 1.00 |
| MC2W0805 - 820M | 82 | 0.40 | 0.93 |
| MC2W0805 - 101K | 100 | 0.52 | 0.81 |
| MC2W0805 - 121K | 120 | 0.59 | 0.76 |
| MC2W0805 - 151K | 150 | 0.71 | 0.67 |
| MC2W0805 - 181K | 180 | 0.89 | 0.62 |
| MC2W0805 - 221K | 220 | 1.04 | 0.54 |
| MC2W0805 - 271K | 270 | 1.28 | 0.49 |
| MC2W0805 - 331K | 330 | 1.47 | 0.44 |
| MC2W0805 - 391K | 390 | 1.67 | 0.41 |
| MC2W0805 - 471K | 470 | 1.95 | 0.38 |
| MC2W0805 - 561K | 560 | 2.83 | 0.35 |
| MC2W0805 - 681K | 680 | 3.25 | 0.32 |
| MC2W0805 - 821K | 820 | 3.82 | 0.31 |
| MC2W0805 - 102K | 1000 | 5.28 | 0.25 |
| MC2W0805 - 122K | 1200 | 6.03 | 0.23 |
| MC2W0805 - 152K | 1500 | 7.15 | 0.21 |
| MC2W0805 - 182K | 1800 | 8.26 | 0.20 |
| MC2W0805 - 222K | 2200 | 11.10 | 0.18 |
| MC2W0805 - 272K | 2700 | 13.10 | 0.16 |
| MC2W0805 - 332K | 3300 | 15.90 | 0.14 |
| MC2W0805 - 392K | 3900 | 18.00 | 0.13 |
| MC2W0805 - 472K | 4700 | 23.90 | 0.12 |
| MC2W0805 - 562K | 5600 | 26.80 | 0.11 |
| MC2W0805 - 682K | 6800 | 31.70 | 0.098 |
| MC2W0805 - 822K | 8200 | 46.50 | 0.088 |
| MC2W0805 - 103K | 10000 | 55.70 | 0.081 |

▶ Electrical Characteristics For MC2W0807 Series

| Part Number | Inductance [μH] | DCR(max) [Ω] | IDC [A] |
|-----------------|--------------------|-----------------|------------|
| MC2W0807 - 100M | 10 | 0.05 | 2.90 |
| MC2W0807 - 120M | 12 | 0.06 | 2.50 |
| MC2W0807 - 150M | 15 | 0.07 | 2.20 |
| MC2W0807 - 180M | 18 | 0.08 | 1.90 |
| MC2W0807 - 220M | 22 | 0.09 | 1.80 |
| MC2W0807 - 270M | 27 | 0.11 | 1.70 |
| MC2W0807 - 330M | 33 | 0.13 | 1.50 |
| MC2W0807 - 390M | 39 | 0.14 | 1.30 |
| MC2W0807 - 470M | 47 | 0.15 | 1.30 |
| MC2W0807 - 560M | 56 | 0.18 | 1.20 |
| MC2W0807 - 680M | 68 | 0.20 | 1.10 |
| MC2W0807 - 820M | 82 | 0.24 | 1.00 |
| MC2W0807 - 101K | 100 | 0.28 | 0.89 |
| MC2W0807 - 121K | 120 | 0.36 | 0.81 |
| MC2W0807 - 151K | 150 | 0.42 | 0.72 |
| MC2W0807 - 181K | 180 | 0.57 | 0.66 |
| MC2W0807 - 221K | 220 | 0.63 | 0.57 |
| MC2W0807 - 271K | 270 | 0.88 | 0.51 |
| MC2W0807 - 331K | 330 | 1.05 | 0.46 |
| MC2W0807 - 391K | 390 | 1.17 | 0.44 |
| MC2W0807 - 471K | 470 | 1.34 | 0.41 |
| MC2W0807 - 561K | 560 | 1.72 | 0.36 |
| MC2W0807 - 681K | 680 | 1.96 | 0.33 |
| MC2W0807 - 821K | 820 | 2.56 | 0.30 |
| MC2W0807 - 102K | 1000 | 2.94 | 0.27 |
| MC2W0807 - 122K | 1200 | 4.04 | 0.24 |
| MC2W0807 - 152K | 1500 | 4.70 | 0.22 |
| MC2W0807 - 182K | 1800 | 5.05 | 0.20 |
| MC2W0807 - 222K | 2200 | 6.25 | 0.18 |
| MC2W0807 - 272K | 2700 | 8.72 | 0.16 |
| MC2W0807 - 332K | 3300 | 10.60 | 0.15 |
| MC2W0807 - 392K | 3900 | 14.20 | 0.14 |
| MC2W0807 - 472K | 4700 | 16.70 | 0.12 |
| MC2W0807 - 562K | 5600 | 18.70 | 0.11 |
| MC2W0807 - 682K | 6800 | 21.80 | 0.10 |
| MC2W0807 - 822K | 8200 | 28.70 | 0.093 |
| MC2W0807 - 103K | 10000 | 33.00 | 0.084 |

▶ Electrical Characteristics For MC2W0809 Series

| Part Number | Inductance [μH] | DCR(max) [Ω] | IDC [A] |
|-----------------|--------------------|-----------------|------------|
| MC2W0809 - 100M | 10 | 0.04 | 2.60 |
| MC2W0809 - 120M | 12 | 0.04 | 2.60 |
| MC2W0809 - 150M | 15 | 0.05 | 2.10 |
| MC2W0809 - 180M | 18 | 0.05 | 2.00 |
| MC2W0809 - 220M | 22 | 0.06 | 1.70 |
| MC2W0809 - 270M | 27 | 0.06 | 1.60 |
| MC2W0809 - 330M | 33 | 0.07 | 1.40 |
| MC2W0809 - 390M | 39 | 0.08 | 1.40 |
| MC2W0809 - 470M | 47 | 0.10 | 1.30 |
| MC2W0809 - 560M | 56 | 0.11 | 1.20 |
| MC2W0809 - 680M | 68 | 0.14 | 1.10 |
| MC2W0809 - 820M | 82 | 0.16 | 1.00 |
| MC2W0809 - 101K | 100 | 0.19 | 0.90 |
| MC2W0809 - 121K | 120 | 0.22 | 0.82 |
| MC2W0809 - 151K | 150 | 0.27 | 0.74 |
| MC2W0809 - 181K | 180 | 0.31 | 0.71 |
| MC2W0809 - 221K | 220 | 0.38 | 0.64 |
| MC2W0809 - 271K | 270 | 0.53 | 0.57 |
| MC2W0809 - 331K | 330 | 0.61 | 0.51 |
| MC2W0809 - 391K | 390 | 0.69 | 0.48 |
| MC2W0809 - 471K | 470 | 0.89 | 0.43 |
| MC2W0809 - 561K | 560 | 1.01 | 0.40 |
| MC2W0809 - 681K | 680 | 1.18 | 0.35 |
| MC2W0809 - 821K | 820 | 1.57 | 0.32 |
| MC2W0809 - 102K | 1000 | 1.84 | 0.30 |
| MC2W0809 - 122K | 1200 | 2.10 | 0.27 |
| MC2W0809 - 152K | 1500 | 2.80 | 0.23 |
| MC2W0809 - 182K | 1800 | 3.21 | 0.21 |
| MC2W0809 - 222K | 2200 | 4.21 | 0.19 |
| MC2W0809 - 272K | 2700 | 4.94 | 0.17 |
| MC2W0809 - 332K | 3300 | 6.16 | 0.15 |
| MC2W0809 - 392K | 3900 | 6.84 | 0.14 |
| MC2W0809 - 472K | 4700 | 7.89 | 0.13 |
| MC2W0809 - 562K | 5600 | 11.5 | 0.12 |
| MC2W0809 - 682K | 6800 | 13.2 | 0.11 |
| MC2W0809 - 822K | 8200 | 15.2 | 0.10 |
| MC2W0809 - 103K | 10000 | 22.0 | 0.089 |
| MC2W0809 - 123K | 12000 | 25.0 | 0.073 |
| MC2W0809 - 153K | 15000 | 29.1 | 0.068 |
| MC2W0809 - 183K | 18000 | 38.9 | 0.066 |
| MC2W0809 - 223K | 22000 | 44.9 | 0.059 |
| MC2W0809 - 273K | 27000 | 55.7 | 0.052 |
| MC2W0809 - 333K | 33000 | 64.2 | 0.048 |
| MC2W0809 - 393K | 39000 | 74.2 | 0.042 |
| MC2W0809 - 473K | 47000 | 96.4 | 0.038 |

▶ Electrical Characteristics For MC2W1014 Series

| Part Number | Inductance [μH] | DCR(max) [Ω] | IDC [A] |
|------------------|--------------------|-----------------|------------|
| MC2W 1014 - 6R3M | 6.3 | 0.260 | 4.30 |
| MC2W 1014 - 7R5M | 7.5 | 0.290 | 4.20 |
| MC2W 1014 - 100M | 10 | 0.033 | 4.00 |
| MC2W 1014 - 120M | 12 | 0.035 | 3.90 |
| MC2W 1014 - 150M | 15 | 0.039 | 3.70 |
| MC2W 1014 - 180M | 18 | 0.047 | 3.50 |
| MC2W 1014 - 220M | 22 | 0.051 | 3.30 |
| MC2W 1014 - 270M | 27 | 0.057 | 3.10 |
| MC2W 1014 - 330M | 33 | 0.064 | 2.90 |
| MC2W 1014 - 390M | 39 | 0.074 | 2.70 |
| MC2W 1014 - 470M | 47 | 0.083 | 2.50 |
| MC2W 1014 - 560M | 56 | 0.104 | 2.30 |
| MC2W 1014 - 680M | 68 | 0.117 | 2.10 |
| MC2W 1014 - 820M | 82 | 0.130 | 1.90 |
| MC2W 1014 - 101K | 100 | 0.143 | 1.70 |
| MC2W 1014 - 121K | 120 | 0.195 | 1.50 |
| MC2W 1014 - 151K | 150 | 0.221 | 1.40 |
| MC2W 1014 - 181K | 180 | 0.260 | 1.30 |
| MC2W 1014 - 221K | 220 | 0.350 | 1.20 |
| MC2W 1014 - 271K | 270 | 0.390 | 1.10 |
| MC2W 1014 - 331K | 330 | 0.520 | 1.00 |
| MC2W 1014 - 391K | 390 | 0.570 | 0.92 |
| MC2W 1014 - 471K | 470 | 0.650 | 0.84 |
| MC2W 1014 - 561K | 560 | 0.790 | 0.75 |
| MC2W 1014 - 681K | 680 | 0.960 | 0.69 |
| MC2W 1014 - 821K | 820 | 1.220 | 0.62 |
| MC2W 1014 - 102K | 1000 | 1.60 | 0.52 |
| MC2W 1014 - 122K | 1200 | 2.20 | 0.46 |
| MC2W 1014 - 152K | 1500 | 2.50 | 0.41 |
| MC2W 1014 - 182K | 1800 | 2.90 | 0.36 |
| MC2W 1014 - 222K | 2200 | 3.20 | 0.32 |
| MC2W 1014 - 272K | 2700 | 3.70 | 0.29 |
| MC2W 1014 - 332K | 3300 | 5.00 | 0.27 |
| MC2W 1014 - 392K | 3900 | 5.60 | 0.25 |
| MC2W 1014 - 472K | 4700 | 7.40 | 0.23 |
| MC2W 1014 - 562K | 5600 | 8.20 | 0.21 |
| MC2W 1014 - 682K | 6800 | 11.9 | 0.19 |
| MC2W 1014 - 822K | 8200 | 14.0 | 0.17 |
| MC2W 1014 - 103K | 10000 | 16.0 | 0.16 |
| MC2W 1014 - 123K | 12000 | 21.0 | 0.15 |
| MC2W 1014 - 153K | 15000 | 24.0 | 0.14 |
| MC2W 1014 - 183K | 18000 | 27.0 | 0.13 |
| MC2W 1014 - 223K | 22000 | 34.0 | 0.12 |
| MC2W 1014 - 273K | 27000 | 39.0 | 0.11 |
| MC2W 1014 - 333K | 33000 | 51.0 | 0.10 |