



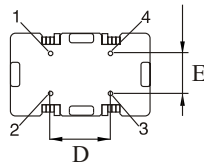
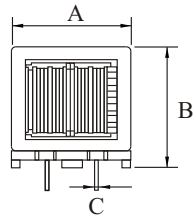
Features

- Small size and inexpensive type
- Easily inserted into PCB.
- Highly reliable, compact

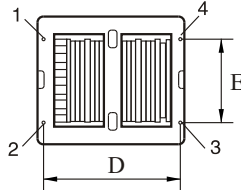
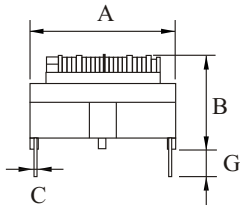
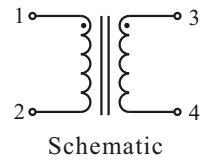
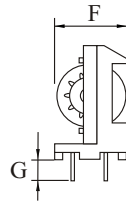
Applications

- Multi-Function Telephones.
- Common Mode Chokes for Effective AC line Noise Prevention.
- AC Adapters, VCRS

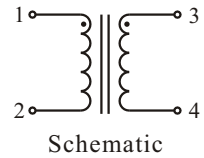
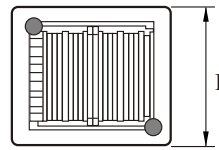
► Dimensions & Configurations (Unit:mm)



ET24V / ET28V



ET24H / ET28H



| Type | A (max) | B (max) | C | D | E | F (max) | G |
|-------|---------|---------|------|----|----|---------|---|
| ET24V | 25.5 | 31.0 | Φ0.8 | 13 | 10 | 18.5 | 4 |
| ET28V | 31.0 | 35.5 | Φ0.8 | 13 | 10 | 22.0 | 4 |
| ET24H | 24.0 | 20.0 | Φ0.8 | 10 | 13 | 24.0 | 4 |
| ET28H | 28.0 | 22.9 | Φ0.8 | 24 | 20 | 28.0 | 4 |

► Electrical Characteristics For ET24V Series

| Part Number | Inductance(min) [mH] | Inductance Tolerance (max) [μH] | DCR (max) [Ω] | IDC (max) [A] |
|-------------|-------------------------|------------------------------------|------------------|------------------|
| ET24V-252 | 2.5 | 100 | 0.13 | 2.0 |
| ET24V-352 | 3.5 | 150 | 0.18 | 1.7 |
| ET24V-452 | 4.5 | 200 | 0.21 | 1.5 |
| ET24V-103 | 10 | 300 | 0.47 | 1.0 |
| ET24V-153 | 15 | 400 | 0.73 | 0.8 |
| ET24V-203 | 20 | 600 | 0.87 | 0.7 |
| ET24V-353 | 35 | 800 | 1.58 | 0.6 |

Note: Design as Customer's Requested Specifications.

▶ Electrical Characteristics For ET28V Series

| Part Number | Inductance(min) [mH] | Inductance Tolerance (max) [μH] | DCR (max) [Ω] | IDC (max) [A] |
|-------------|-------------------------|------------------------------------|------------------|------------------|
| ET28V-182 | 1.8 | 100 | 0.07 | 2.6 |
| ET28V-682 | 6.8 | 200 | 0.23 | 1.6 |
| ET28V-123 | 12 | 400 | 0.38 | 1.2 |
| ET28V-223 | 22 | 500 | 0.65 | 1.0 |
| ET28V-393 | 39 | 700 | 1.43 | 0.7 |
| ET28V-683 | 68 | 850 | 1.82 | 0.6 |

▶ Electrical Characteristics For ET24H Series

| Part Number | Inductance(min) [mH] | Inductance Tolerance (max) [μH] | DCR (max) [Ω] | IDC (max) [A] |
|-------------|-------------------------|------------------------------------|------------------|------------------|
| ET24H-252 | 2.5 | 100 | 0.13 | 2.0 |
| ET24H-352 | 3.5 | 150 | 0.18 | 1.7 |
| ET24H-452 | 4.5 | 200 | 0.21 | 1.5 |
| ET24H-103 | 10 | 300 | 0.47 | 1.0 |
| ET24H-153 | 15 | 400 | 0.73 | 0.8 |
| ET24H-203 | 20 | 600 | 0.87 | 0.7 |
| ET24H-353 | 35 | 800 | 1.58 | 0.6 |

▶ Electrical Characteristics For ET28H Series

| Part Number | Inductance(min) [mH] | Inductance Tolerance (max) [μH] | DCR (max) [Ω] | IDC (max) [A] |
|-------------|-------------------------|------------------------------------|------------------|------------------|
| ET28H-182 | 1.8 | 100 | 0.07 | 2.6 |
| ET28H-682 | 6.8 | 200 | 0.23 | 1.6 |
| ET28H-123 | 12 | 400 | 0.38 | 1.2 |
| ET28H-223 | 22 | 500 | 0.65 | 1.0 |
| ET28H-393 | 39 | 700 | 1.43 | 0.7 |
| ET28H-683 | 68 | 850 | 1.82 | 0.6 |

Note: Design as Customer's Requested Specifications.