



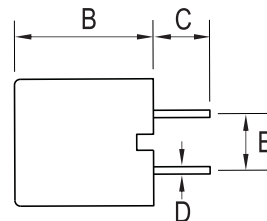
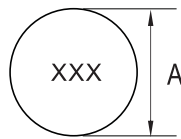
## Features

- Low DC resistance and high current handling capacities, making them ideal for power supply line applications.
- Available in tape packaging to support automated mounting machines.
- Conforming to RoHS directive.

## Applications

- Televisions
- VCRs
- Personal computers
- other electronic equipment

## ► Dimensions & Configurations (Unit:mm)



| Type    | A        | B        | C     | D         | E       |
|---------|----------|----------|-------|-----------|---------|
| TSL0709 | 7.7±0.3  | 9.5±0.1  | 5±1   | 0.65±0.05 | 5±1     |
| TSL0808 | 8.5±0.3  | 8.3±0.5  | 5±1   | 0.62±0.05 | 5±0.8   |
| TSL1112 | 11.2±0.3 | 12.2±0.3 | 5±1   | 0.65±0.05 | 5±1     |
| TSL1315 | 14 max   | 17 max   | 5±0.5 | 0.8±0.05  | 7.5±0.5 |

Note: Design as Customer's Requested Specifications.

## ► Electrical Characteristics For TSL0709Series

| Part Number  | Inductance<br>[ $\mu$ H] | Tolerance  | Q<br>(min) | Test Freq L,Q<br>[Hz] | SRF(min)<br>MHz | DCR(max)<br>[ $\Omega$ ] | Irms<br>[A] | Isat<br>[A] |
|--------------|--------------------------|------------|------------|-----------------------|-----------------|--------------------------|-------------|-------------|
| TSL0709-1R0M | 1                        | $\pm 20\%$ | 10         | 1k/7.96M              | 70              | 0.006                    | 5.0         | 6.6         |
| TSL0709-1R5M | 1.5                      | $\pm 20\%$ | 10         | 1k/7.96M              | 56              | 0.008                    | 4.3         | 5.4         |
| TSL0709-2R2M | 2.2                      | $\pm 20\%$ | 10         | 1k/7.96M              | 45              | 0.011                    | 3.7         | 4.0         |
| TSL0709-3R3M | 3.3                      | $\pm 20\%$ | 10         | 1k/7.96M              | 36              | 0.018                    | 2.9         | 3.6         |
| TSL0709-4R7M | 4.7                      | $\pm 20\%$ | 10         | 1k/7.96M              | 29              | 0.022                    | 2.6         | 3.1         |
| TSL0709-6R8M | 6.8                      | $\pm 20\%$ | 10         | 1k/7.96M              | 24              | 0.028                    | 2.3         | 2.5         |
| TSL0709-100K | 10                       | $\pm 10\%$ | 20         | 1k/2.52M              | 19              | 0.043                    | 1.9         | 2.1         |
| TSL0709-150K | 15                       | $\pm 10\%$ | 20         | 1k/2.52M              | 15              | 0.056                    | 1.6         | 1.7         |
| TSL0709-220K | 22                       | $\pm 10\%$ | 20         | 1k/2.52M              | 12              | 0.086                    | 1.3         | 1.4         |
| TSL0709-330K | 33                       | $\pm 10\%$ | 20         | 1k/2.52M              | 9.4             | 0.14                     | 1.0         | 1.1         |
| TSL0709-470K | 47                       | $\pm 10\%$ | 20         | 1k/2.52M              | 7.6             | 0.17                     | 0.94        | 0.96        |
| TSL0709-680K | 68                       | $\pm 10\%$ | 20         | 1k/2.52M              | 6.2             | 0.28                     | 0.73        | 0.79        |
| TSL0709-101K | 100                      | $\pm 10\%$ | 20         | 1k/796k               | 5.0             | 0.33                     | 0.67        | 0.66        |
| TSL0709-151K | 150                      | $\pm 10\%$ | 20         | 1k/796k               | 4.0             | 0.56                     | 0.52        | 0.53        |
| TSL0709-221K | 220                      | $\pm 10\%$ | 20         | 1k/796k               | 3.2             | 0.72                     | 0.46        | 0.44        |
| TSL0709-331K | 330                      | $\pm 10\%$ | 20         | 1k/796k               | 2.5             | 1.1                      | 0.37        | 0.36        |
| TSL0709-471K | 470                      | $\pm 10\%$ | 20         | 1k/796k               | 2.0             | 1.7                      | 0.30        | 0.30        |
| TSL0709-681K | 680                      | $\pm 10\%$ | 20         | 1k/796k               | 1.7             | 2.3                      | 0.26        | 0.25        |
| TSL0709-102K | 1000                     | $\pm 10\%$ | 70         | 1k/252k               | 1.3             | 4.3                      | 0.19        | 0.20        |
| TSL0709-152K | 1500                     | $\pm 10\%$ | 50         | 1k/252k               | 1.3             | 5.0                      | 0.16        | 0.17        |

## ► Electrical Characteristics For TSL0808 Series

| Part Number  | Inductance<br>[ $\mu$ H] | Tolerance  | Q<br>(min) | Test Freq L,Q<br>[Hz] | SRF(min)<br>MHz | DCR(max)<br>[ $\Omega$ ] | Irms<br>[A] | Isat<br>[A] |
|--------------|--------------------------|------------|------------|-----------------------|-----------------|--------------------------|-------------|-------------|
| TSL0808-2R2M | 2.2                      | $\pm 20\%$ | 10         | 1k/7.96M              | 45              | 0.015                    | 3.9         | 5.6         |
| TSL0808-3R3M | 3.3                      | $\pm 20\%$ | 10         | 1k/7.96M              | 34              | 0.017                    | 3.8         | 4.5         |
| TSL0808-4R7M | 4.7                      | $\pm 20\%$ | 10         | 1k/7.96M              | 27              | 0.021                    | 3.5         | 3.8         |
| TSL0808-6R8M | 6.8                      | $\pm 20\%$ | 10         | 1k/7.96M              | 22              | 0.025                    | 3.1         | 3.2         |
| TSL0808-100K | 10                       | $\pm 10\%$ | 20         | 1k/2.52M              | 17              | 0.031                    | 2.7         | 2.6         |
| TSL0808-150K | 15                       | $\pm 10\%$ | 20         | 1k/2.52M              | 13              | 0.042                    | 2.4         | 2.1         |
| TSL0808-220K | 22                       | $\pm 10\%$ | 20         | 1k/2.52M              | 10              | 0.070                    | 1.9         | 1.7         |
| TSL0808-330K | 33                       | $\pm 10\%$ | 20         | 1k/2.52M              | 8               | 0.092                    | 1.5         | 1.4         |
| TSL0808-470K | 47                       | $\pm 10\%$ | 20         | 1k/2.52M              | 6.5             | 0.13                     | 1.3         | 1.2         |
| TSL0808-680K | 68                       | $\pm 10\%$ | 20         | 1k/2.52M              | 5.4             | 0.16                     | 1.1         | 1.0         |
| TSL0808-101K | 100                      | $\pm 10\%$ | 20         | 1k/796k               | 4.4             | 0.25                     | 0.94        | 0.80        |
| TSL0808-151K | 150                      | $\pm 10\%$ | 20         | 1k/796k               | 3.6             | 0.40                     | 0.73        | 0.67        |
| TSL0808-221K | 220                      | $\pm 10\%$ | 15         | 1k/796k               | 2.9             | 0.53                     | 0.64        | 0.54        |
| TSL0808-331K | 330                      | $\pm 10\%$ | 15         | 1k/796k               | 2.4             | 0.78                     | 0.52        | 0.45        |
| TSL0808-471K | 470                      | $\pm 10\%$ | 15         | 1k/796k               | 2.0             | 1.0                      | 0.46        | 0.38        |
| TSL0808-681K | 680                      | $\pm 10\%$ | 15         | 1k/796k               | 1.6             | 1.5                      | 0.37        | 0.32        |
| TSL0808-102K | 1000                     | $\pm 10\%$ | 30         | 1k/252k               | 1.3             | 2.2                      | 0.30        | 0.26        |
| TSL0808-152K | 1500                     | $\pm 10\%$ | 30         | 1k/252k               | 1.1             | 3.5                      | 0.25        | 0.21        |
| TSL0808-222K | 2200                     | $\pm 10\%$ | 50         | 1k/252k               | 0.88            | 6.4                      | 0.21        | 0.17        |
| TSL0808-332K | 3300                     | $\pm 10\%$ | 50         | 1k/252k               | 0.71            | 8.5                      | 0.16        | 0.14        |
| TSL0808-472J | 4700                     | $\pm 5\%$  | 50         | 1k/252k               | 0.68            | 12.2                     | 0.13        | 0.15        |

► Electrical Characteristics For TSL1112 Series

| Part Number  | Inductance<br>[ $\mu$ H] | Tolerance | Q<br>(min) | Test Freq L,Q<br>[Hz] | SRF(min)<br>MHz | DCR(max)<br>[ $\Omega$ ] | I <sub>rms</sub><br>[A] | I <sub>sat</sub><br>[A] |
|--------------|--------------------------|-----------|------------|-----------------------|-----------------|--------------------------|-------------------------|-------------------------|
| TSL1112-1R0M | 1                        | ±20%      | 15         | 1k/7.96M              | 144             | 0.058                    | 7.7                     | 14                      |
| TSL1112-2R2M | 2.2                      | ±20%      | 15         | 1k/7.96M              | 70              | 0.073                    | 6.7                     | 10                      |
| TSL1112-3R3M | 3.3                      | ±20%      | 10         | 1k/7.96M              | 36              | 0.010                    | 5.9                     | 8.8                     |
| TSL1112-4R7M | 4.7                      | ±20%      | 10         | 1k/7.96M              | 28              | 0.015                    | 4.8                     | 7.2                     |
| TSL1112-6R8M | 6.8                      | ±20%      | 10         | 1k/7.96M              | 18              | 0.016                    | 4.6                     | 6.1                     |
| TSL1112-100M | 10                       | ±20%      | 20         | 1k/2.52M              | 16              | 0.025                    | 3.7                     | 5.0                     |
| TSL1112-150M | 15                       | ±20%      | 20         | 1k/2.52M              | 12              | 0.029                    | 3.4                     | 4.2                     |
| TSL1112-220K | 22                       | ±10%      | 20         | 1k/2.52M              | 9.5             | 0.040                    | 2.9                     | 3.4                     |
| TSL1112-330K | 33                       | ±10%      | 30         | 1k/2.52M              | 7               | 0.062                    | 2.3                     | 2.8                     |
| TSL1112-470K | 47                       | ±10%      | 30         | 1k/2.52M              | 5.8             | 0.075                    | 2.1                     | 2.3                     |
| TSL1112-680K | 68                       | ±10%      | 20         | 1k/2.52M              | 4.7             | 0.13                     | 1.6                     | 1.9                     |
| TSL1112-101K | 100                      | ±10%      | 20         | 1k/796k               | 3.8             | 0.16                     | 1.4                     | 1.6                     |
| TSL1112-151K | 150                      | ±10%      | 20         | 1k/796k               | 3.1             | 0.26                     | 1.1                     | 1.3                     |
| TSL1112-221K | 220                      | ±10%      | 20         | 1k/796k               | 2.5             | 0.33                     | 1.0                     | 1.1                     |
| TSL1112-331K | 330                      | ±10%      | 20         | 1k/796k               | 2               | 0.52                     | 0.82                    | 0.88                    |
| TSL1112-471K | 470                      | ±10%      | 10         | 1k/796k               | 1.6             | 0.66                     | 0.72                    | 0.75                    |
| TSL1112-681K | 680                      | ±10%      | 10         | 1k/796k               | 1.3             | 1.1                      | 0.56                    | 0.61                    |
| TSL1112-102J | 1000                     | ±5%       | 20         | 1k/252k               | 1.1             | 1.4                      | 0.50                    | 0.51                    |
| TSL1112-152J | 1500                     | ±5%       | 30         | 1k/252k               | 0.82            | 2.4                      | 0.38                    | 0.43                    |
| TSL1112-222J | 2200                     | ±5%       | 20         | 1k/252k               | 0.76            | 3.2                      | 0.33                    | 0.35                    |
| TSL1112-332J | 3300                     | ±5%       | 30         | 1k/252k               | 0.64            | 4.9                      | 0.26                    | 0.28                    |
| TSL1112-472J | 4700                     | ±5%       | 30         | 1k/252k               | 0.54            | 7.6                      | 0.21                    | 0.24                    |
| TSL1112-682J | 6800                     | ±5%       | 30         | 1k/252k               | 0.45            | 9.8                      | 0.18                    | 0.20                    |
| TSL1112-103J | 10000                    | ±5%       | 30         | 1k/79.6k              | 0.38            | 18                       | 0.14                    | 0.17                    |
| TSL1112-153J | 15000                    | ±5%       | 50         | 1k/79.6k              | 0.29            | 24                       | 0.12                    | 0.13                    |

► Electrical Characteristics For TSL1315 Series

| Part Number  | Inductance<br>[ $\mu$ H] | Tolerance | Q<br>(min) | Test Freq L,Q<br>[Hz] | SRF(min)<br>MHz | DCR(max)<br>[ $\Omega$ ] | I <sub>rms</sub><br>[A] | I <sub>sat</sub><br>[A] |
|--------------|--------------------------|-----------|------------|-----------------------|-----------------|--------------------------|-------------------------|-------------------------|
| TSL1315-100K | 10                       | ±10%      | 70         | 1k/2.52M              | 19              | 0.023                    | 5.1                     | 12                      |
| TSL1315-150K | 15                       | ±10%      | 70         | 1k/2.52M              | 12              | 0.028                    | 4.5                     | 9.5                     |
| TSL1315-220K | 22                       | ±10%      | 60         | 1k/2.52M              | 7.6             | 0.035                    | 4.2                     | 8.2                     |
| TSL1315-330K | 33                       | ±10%      | 50         | 1k/2.52M              | 6.9             | 0.043                    | 3.7                     | 6.8                     |
| TSL1315-470K | 47                       | ±10%      | 50         | 1k/2.52M              | 5.6             | 0.052                    | 3.4                     | 5.7                     |
| TSL1315-680K | 68                       | ±10%      | 40         | 1k/2.52M              | 4.4             | 0.068                    | 3.0                     | 4.8                     |
| TSL1315-101K | 100                      | ±10%      | 50         | 1k/796k               | 3.3             | 0.097                    | 2.5                     | 3.9                     |
| TSL1315-151K | 150                      | ±10%      | 50         | 1k/796k               | 2.6             | 0.140                    | 2.1                     | 3.2                     |
| TSL1315-221K | 220                      | ±10%      | 40         | 1k/796k               | 2.2             | 0.20                     | 1.7                     | 2.7                     |
| TSL1315-331K | 330                      | ±10%      | 30         | 1k/796k               | 1.8             | 0.30                     | 1.4                     | 2.1                     |
| TSL1315-471K | 470                      | ±10%      | 30         | 1k/796k               | 1.5             | 0.43                     | 1.1                     | 1.8                     |
| TSL1315-681K | 680                      | ±10%      | 30         | 1k/796k               | 1.2             | 0.61                     | 0.99                    | 1.5                     |
| TSL1315-102J | 1000                     | ±5%       | 30         | 1k/252k               | 1               | 1.0                      | 0.78                    | 1.2                     |
| TSL1315-152J | 1500                     | ±5%       | 40         | 1k/252k               | 0.83            | 1.3                      | 0.68                    | 1.0                     |
| TSL1315-222J | 2200                     | ±5%       | 40         | 1k/252k               | 0.7             | 2.0                      | 0.55                    | 0.83                    |
| TSL1315-332J | 3300                     | ±5%       | 40         | 1k/252k               | 0.6             | 3.1                      | 0.44                    | 0.69                    |
| TSL1315-472J | 4700                     | ±5%       | 40         | 1k/252k               | 0.43            | 4.4                      | 0.37                    | 0.58                    |
| TSL1315-682J | 6800                     | ±5%       | 30         | 1k/252k               | 0.38            | 6.5                      | 0.30                    | 0.46                    |
| TSL1315-103J | 10000                    | ±5%       | 70         | 1k/79.6k              | 0.3             | 10                       | 0.24                    | 0.40                    |