



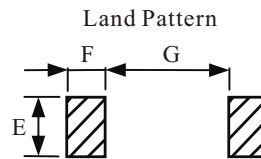
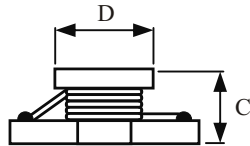
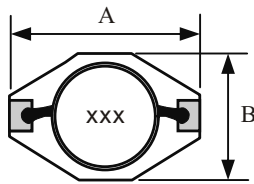
### Features

- Compact size and thin.
- Open magnetic circuit construction.
- Large current and low DCR.

### Applications

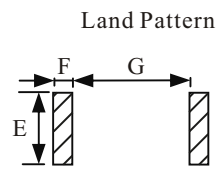
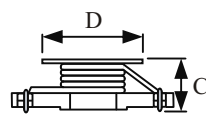
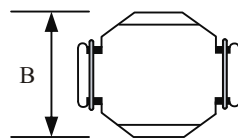
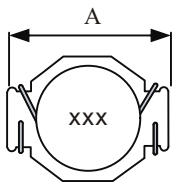
- Notebook, DC-DC applications.
- Power supply applications.

## ► Dimensions & Configurations (Unit:mm)



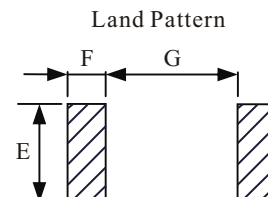
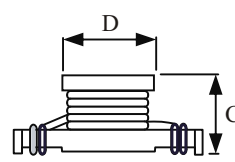
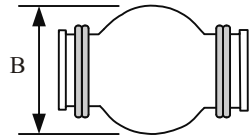
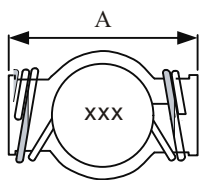
Type	A(max)	B(max)	C ± 0.3	D(max)	E±0.3	F(Ref)	G ± 0.2
MSG1813HC	8.9	6.1	5.0	4.8	4.01	1.91	6.99

## ► Dimensions & Configurations (Unit:mm)



Type	A(max)	B(max)	C ± 0.3	D(max)	E±0.3	F(Ref)	G ± 0.2
MSG3316HC	13.2	9.9	6.4	8.4	4.06	1.52	10.16

## ► Dimensions & Configurations (Unit:mm)



Type	A(max)	B(max)	C ± 0.3	D(max)	E±0.3	F(Ref)	G ± 0.2
MSG5022HC	22.4	16.3	8.0	12.7	8.64	3.18	17.53

Note: Design as Customer's Requested Specifications.

## ► Electrical Characteristics For MSG1813HC Series

Part Number	L [μH]	DCR(max) [Ω]	SRF(Typ) [MHz]	Isat [A]	Irms [A]
MSG1813HC - R18M	0.18	0.003	800	14.0	10.0
MSG1813HC - R33M	0.33	0.004	600	10.0	7.0
MSG1813HC - R56M	0.56	0.010	200	7.7	6.0
MSG1813HC - 1R2M	1.2	0.017	140	5.3	4.4
MSG1813HC - 2R2M	2.2	0.035	100	3.5	3.1
MSG1813HC - 3R3M	3.3	0.040	80	3.0	2.7
MSG1813HC - 4R7M	4.7	0.054	50	2.6	2.2
MSG1813HC - 6R8M	6.8	0.080	45	2.2	1.8
MSG1813HC - 100M	10	0.111	40	1.9	1.5
MSG1813HC - 150M	15	0.170	30	1.5	1.2
MSG1813HC - 220M	22	0.250	25	1.2	1.0
MSG1813HC - 330M	33	0.350	20	0.99	0.82
MSG1813HC - 470M	47	0.470	15	0.87	0.72
MSG1813HC - 680M	68	0.730	10	0.68	0.56
MSG1813HC - 101M	100	1.110	8	0.53	0.47

## ► Electrical Characteristics For MSG3316HC Series

Part Number	L [μH]	DCR(max) [Ω]	SRF(Typ) [MHz]	Isat [A]	Irms [A]
MSG3316HC - R33M	0.33	0.002	300	20.0	16.0
MSG3316HC - R68M	0.68	0.005	200	13.0	12.0
MSG3316HC - 1R0M	1	0.006	100	11.0	10.0
MSG3316HC - 1R5M	1.5	0.008	90	9.0	9.0
MSG3316HC - 2R2M	2.2	0.011	90	7.8	7.4
MSG3316HC - 2R7M	2.7	0.012	65	7.0	6.6
MSG3316HC - 3R3M	3.3	0.014	65	6.4	5.9
MSG3316HC - 4R7M	4.7	0.018	45	5.4	4.8

Note: 1. Inductance tested at 100KHz / 0.25V;  
 2. Operating temp: -40°C to +85°C;  
 3. Inductance drop=10% typ. at IDC

## ► Electrical Characteristics For MSG5022HC Series

Part Number	L [μH]	DCR(max) [Ω]	SRF(Typ) [MHz]	IDC(max) [A]	Irms [A]
MSG5022HC - R78M	0.78	0.0026	156	30	15
MSG5022HC - 1R5M	1.5	0.0040	100	25	15
MSG5022HC - 2R2M	2.2	0.0061	75	20	12
MSG5022HC - 3R3M	3.3	0.0086	60	17	10
MSG5022HC - 3R9M	3.9	0.010	55	15	9.0
MSG5022HC - 4R7M	4.7	0.014	40	13	8.4
MSG5022HC - 6R0M	6	0.017	35	12	7.5
MSG5022HC - 7R8M	7.8	0.018	35	11	7.5
MSG5022HC - 100M	10	0.026	28	10	6.0
MSG5022HC - 150M	15	0.032	20	8	4.4

Note: 1. Inductance tested at 100KHz / 0.1V;  
 2. Operating temp: -40°C to +85°C;  
 3. Inductance drop=10% typ. at IDC